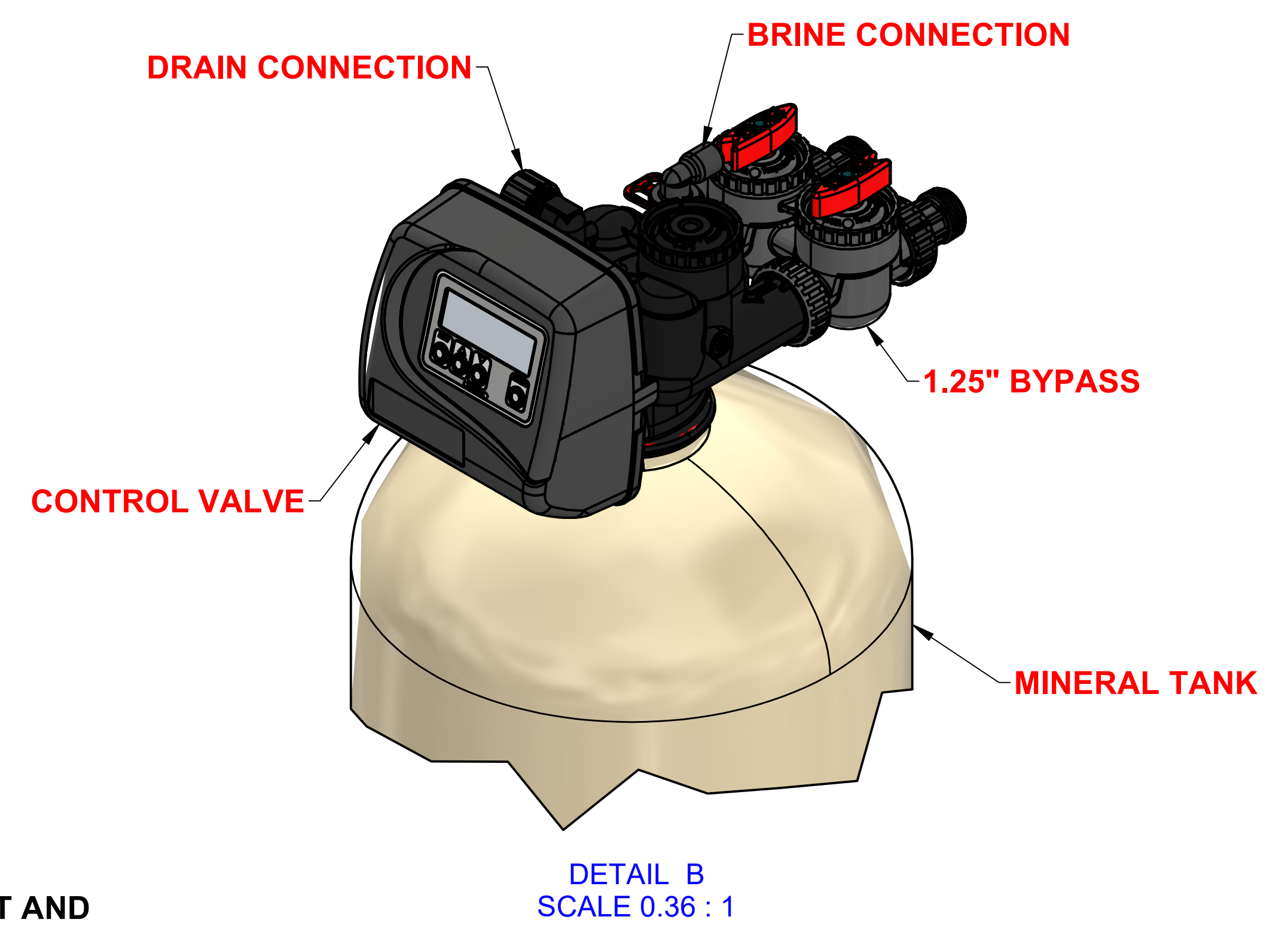
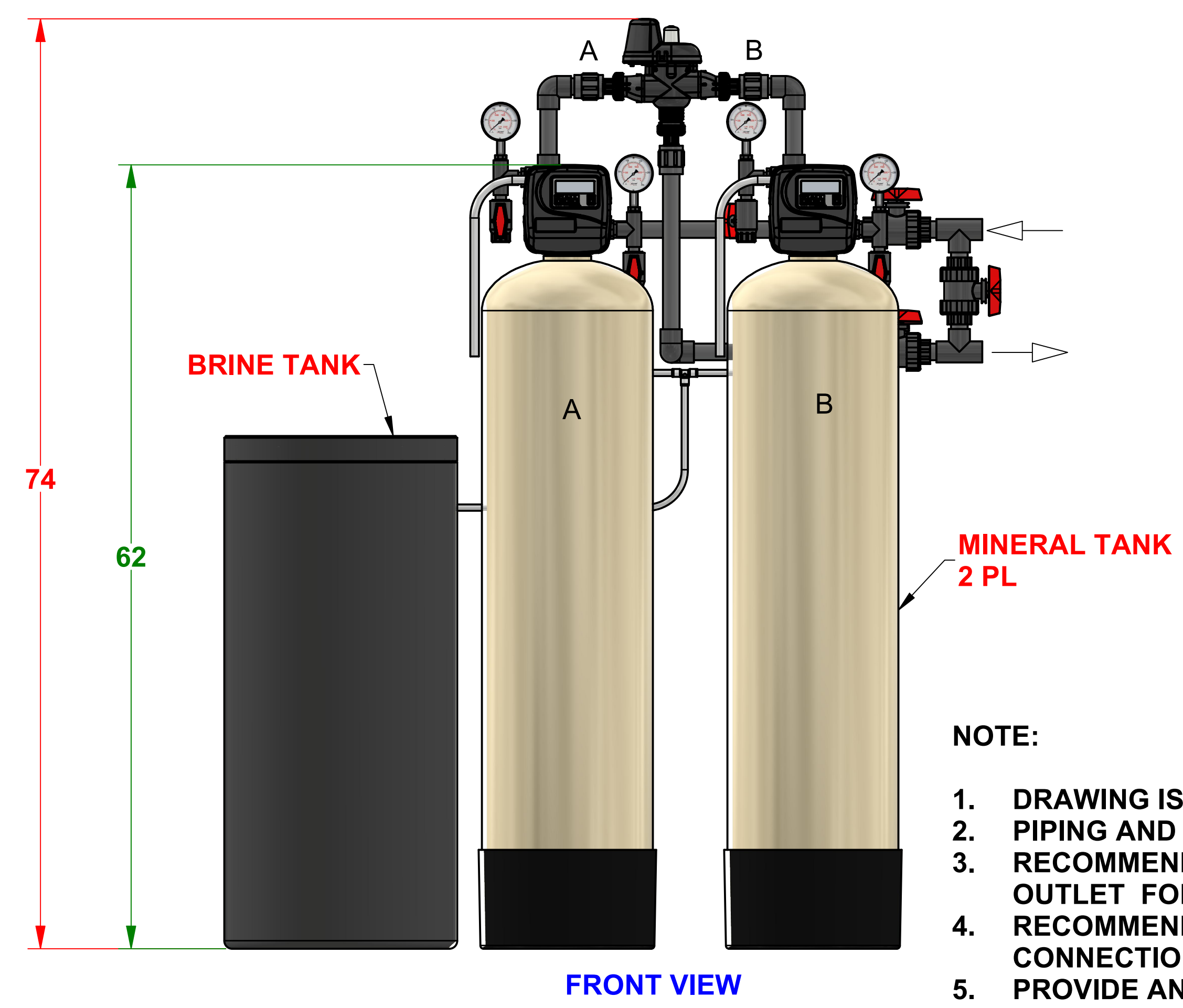
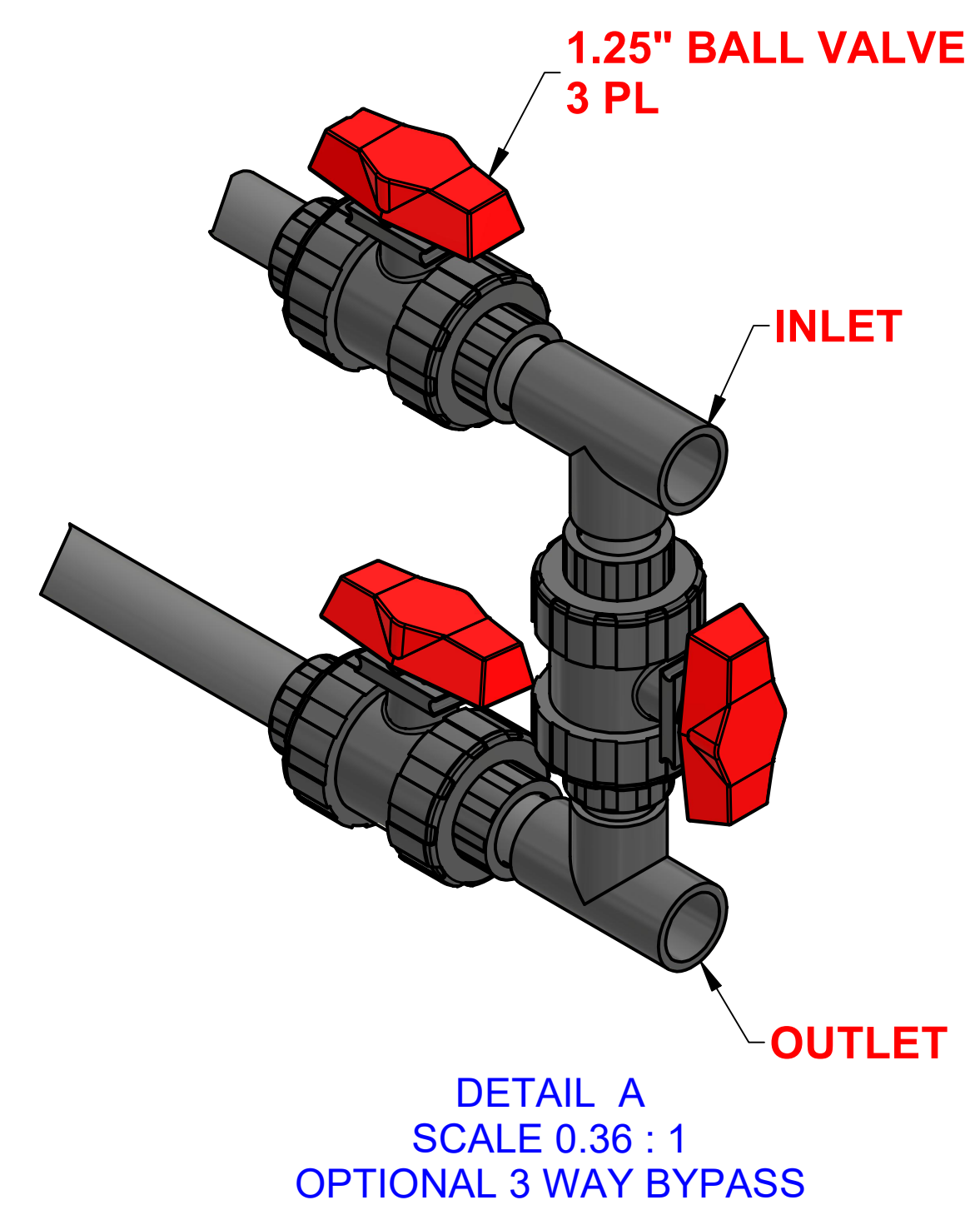
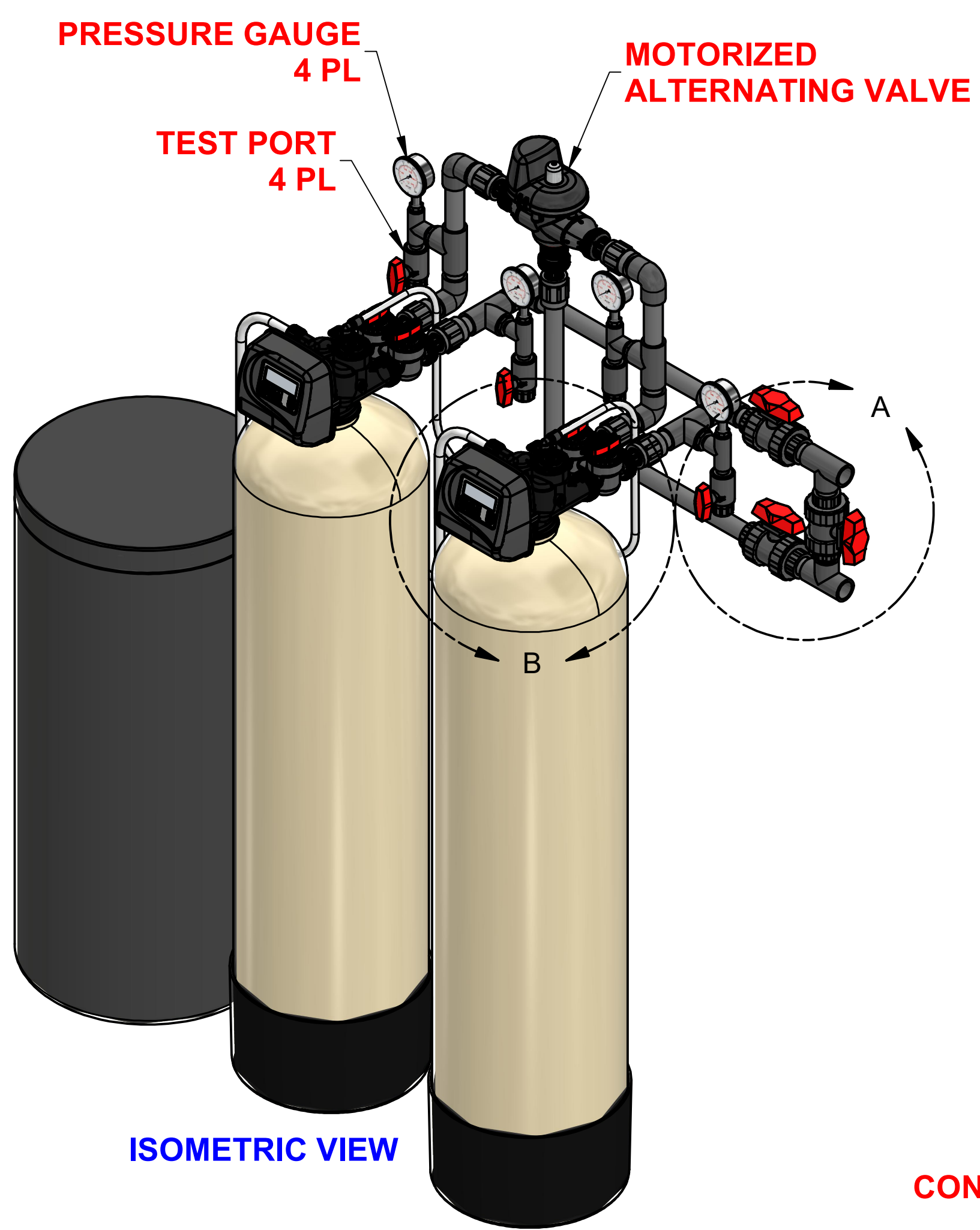
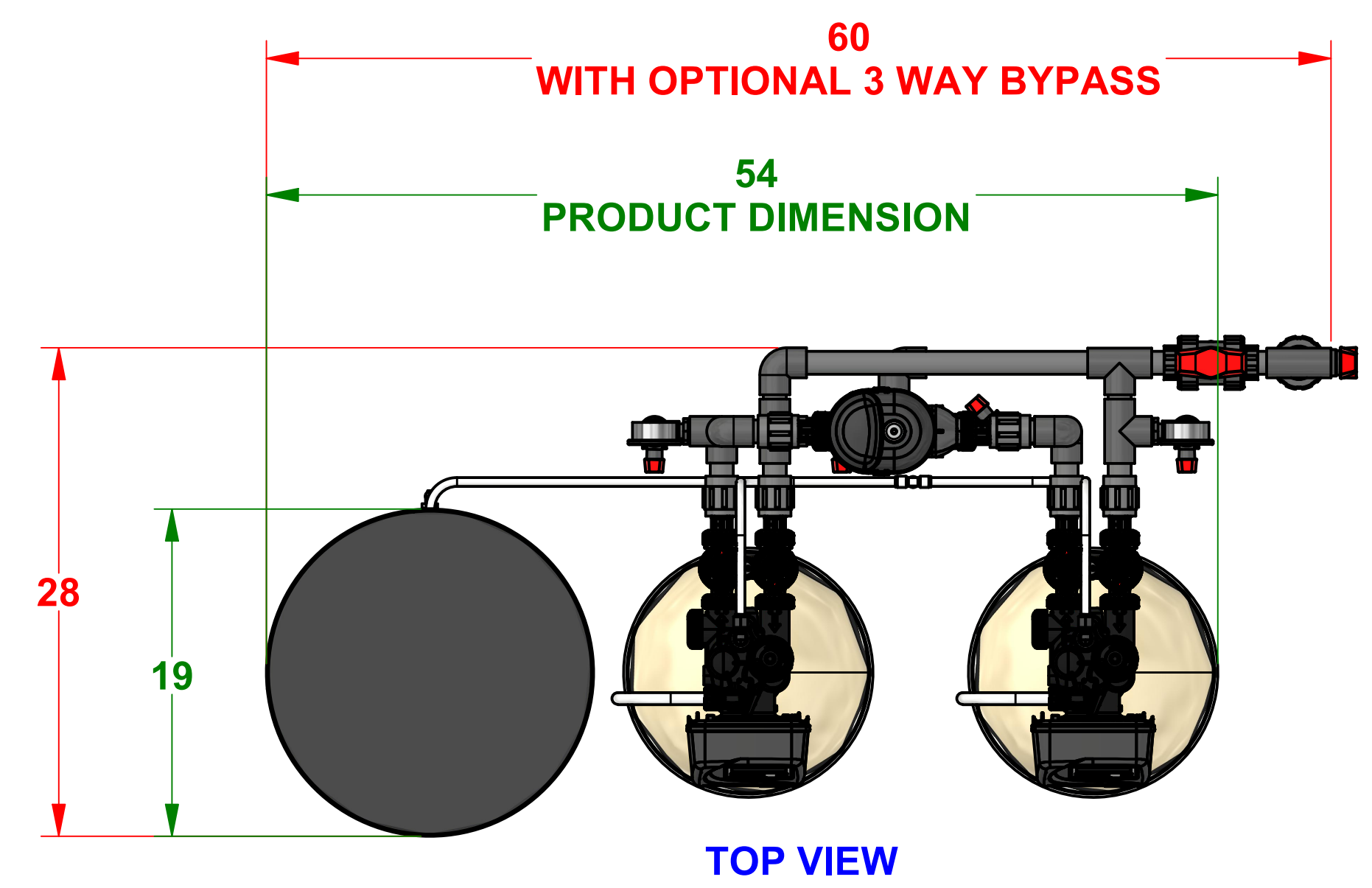


| CONTROL VALVE (in) | PIPING CONNECTIONS (in) |        |       |       | MINERAL TANK (in) | BRINE TANK (in) | RESIN PER VESSEL (ft³) | CAPACITY (GRAINS) |            |           |            | FLOW RATE (gpm) |          |         |          |          | WEIGHT (lbs) |          |           |
|--------------------|-------------------------|--------|-------|-------|-------------------|-----------------|------------------------|-------------------|------------|-----------|------------|-----------------|----------|---------|----------|----------|--------------|----------|-----------|
|                    | INLET                   | OUTLET | DRAIN | BRINE |                   |                 |                        | 15 lbs/ft³        | 10 lbs/ft³ | 6 lbs/ft³ | MAX SYSTEM | MIN             | CRITICAL | SERVICE | 15psi ΔP | 25psi ΔP | BACKWASH     | SHIPPING | OPERATING |
| 1.25               | 1.25                    | 1.25   | 0.75  | 0.375 | 13 X 54           | 18 X 40         | 2.5                    | 75,000            | 67,500     | 50,000    | 150,000    | 1.8             | 7.5      | 11.0    | 24.0     | 32.0     | 4.2          | 400      | 1,300     |

| REVISION HISTORY |                 |            |             |           |
|------------------|-----------------|------------|-------------|-----------|
| REV              | DESCRIPTION     | DATE       | DESIGNER    | APPROVED  |
| A                | INITIAL RELEASE | 2022-07-13 | CSIDDARUSHI | M. GARNER |



- NOTE:**
- DRAWING IS FOR REFERENCE ONLY.
  - PIPING AND INSTRUMENTATION SHOWN ARE NOT INCLUDED IN THE SCOPE.
  - RECOMMEND INSTALLING HORIZONTAL FLEX CONNECTORS ON BOTH INLET AND OUTLET FOR FRP TANK EXPANSION.
  - RECOMMEND INSTALLING VACUUM BREAKER(S) ON ALL INLET FRP TANK CONNECTIONS.
  - PROVIDE AN AIR GAP ON DRAIN LINE OF AT LEAST 4 TIMES THE DIAMETER OF THE PIPE OR FOLLOW LOCAL PLUMBING CODES.
  - OUTLET OF SOFTENER "A" GOES TO INLET OF MAV "A" & OUTLET OF SOFTENER "B" GOES TO INLET OF MAV "B"

This drawing contains information and data which is proprietary to Excalibur Water Systems Inc. This drawing, or any portion thereof, may not be reproduced, copied, or duplicated in any manner, nor used for manufacturing, without the written permission of Excalibur Water Systems Inc.

|                    |  |                       |            |              |  |             |     |
|--------------------|--|-----------------------|------------|--------------|--|-------------|-----|
|                    | UNLESS OTHERWISE SPECIFIED dimensions are in inches.           | DRAWN CSIDDARUSHI     | 2022-07-13 | TITLE        | <b>WATER SOFTENER 1.25" DUPLEX ALTERNATING 75,000 CAPACITY</b> |             |     |
|                    | Tolerance on:<br>Decimals .XXX = ± .5<br>.XX = ± 1<br>.X = ± 2 | CHECKED M. GARNER     | 2022-07-13 | DRW NO:      |  | EWS SD12575 |     |
|                    |  | PROJECT MGR M. GARNER | 2022-07-13 | SCALE        |  |             | 1/8 |
|                    |  | ELE ENGINEER NA       | 2022-07-13 | SHEET 1 OF 1 |  |             |     |
| APPROVED M. GARNER | 2022-07-13   | Rev                   | A          |              |  |             |     |